



ACTION ED



HE REO RANGATAHI
HE AO HURIHURI

ANNUAL REPORT FY2025

Contents

Vision Mission Values	2
Trust Board	4
CEO Message	6
Message from our Chairperson	8
The Stats	9
Exciting Transition for Action Education	10
WORD – The Front Line Tāmaki Makaurau 2024	12
WORD – The Front Line Ōtautahi 2024	14
Teachers’ Night 2024	14
Workshops	15
Alumni Spotlight: Lex Shoemark	16
Alumni Spotlight: Aryi Koko Telfer	18
Ngā Toi O Rongo	20
Stand Up Community Poetry Nights	20
Te Moana-nui-ā-Kiwa Spoken Word Open Mic	21
Mahuru Māori Spoken Word Showcase	21
Slice of Southside	21
Word Summit	22
South Leadership Summit	22
Road to Waitangi	23
Our Village	24
Our team	24
WORD – The Front Line Tāmaki Makaurau Coaches	28
WORD – The Front Line Ōtautahi Coaches	30
Funding thank you	32
Funding logos	33
Financials	36

Vision, Mission, Values

Vision

Enable young people to express their authenticity while growing a vibrant community that supports them.

Mission

Our kaupapa is to strengthen identity and develop self-esteem through creative self-expression, using the medium of spoken word.

Values

This set of values reflects who we are, what we do, how we do it and where we are going.

Kia Ngākau Toi -

We fundamentally believe that creativity is essential for wellbeing. Through professional mentorship, we nurture and hone the innate talent of each individual.

Kia Manaaki Tētahi Ki Tētahi -

We embody manaakitanga. Providing a safe, accessible, supportive, non-judgmental space for everyone we engage with.

Respecting and meeting the needs of each individual.

Kia Hāngai -

Young people feel a sense of ownership and belonging.

We bring

together a community that listens without judgement and values each voice so individuals feel truly seen.

Kia Pono, Kia Aroha -

We consistently deliver on our word. We create safe and supportive spaces with a transparent, genuine and open-minded approach.

Kia Ngākau Nui -

Our priority is the healthy development of young people.

We believe vulnerability has power and strength - when modelled safely and authentically by our mentors, giving others permission to follow.

Kia Angitu -

Our foundations are strong and have been built on by generations of passionate and skilled facilitators. Led by the needs of our community and guided by best practice, we evolve and develop over time while maintaining the highest of standards.

Kia Mauri Ora -

We bring passion, positivity and vitality to everything we do. Our energy is infectious and ignites the spark within.



Trust Board



Erin Matariki - Chair

Erin Matariki Carr (Ngāi Tūhoe, Ngāti Awa, Pākehā) is a lawyer, scholar and community educator based in Tāneatua, Bay of Plenty. Matariki dedicates her work to the inter-generational movement of transforming Aotearoa New Zealand's constitution to one that honours Te Tiriti o Waitangi and uplifts the wellbeing of the land and her living systems. She believes that self-expression is a first step in self-determination, that we must know who we are first, so that we can best care for ourselves and each other. Matariki is ready to support the work of Action Education in lifting creativity and imagination for rangatahi and community expression and sees this will in turn nurtures our future of tino rangatiratanga and balance in Aotearoa.



Kaajal Kumar - Treasurer

Kaajal Kumar is a partner at FINDEX, dedicated to helping businesses make savvy decisions and pinpoint their priorities. With a mission to boost wealth creation—whether through growth, profit enhancement, cash flow improvements, asset protection, or crafting retirement exit strategies—she's got it covered! With 23 years of industry experience under her belt, Kaajal is a pro at navigating various accounting software to find the perfect fit for each business. Her expertise spans several sectors, including medical, hospitality, advertising, construction, property development, wholesale, and retail.



Alice Heather - Secretary

He uri ō Ngāti Raukawa ki te tonga
Alice has been a secondary school teacher in Māori medium for the last thirty years. She has recently retired and is currently pursuing another degree in Kaitiakitanga. As an English teacher, she became passionate about Spoken Word in 2017 as a way for rangatahi to develop their voices to explore their world, passions, and challenges.



Ezekiel Raiu

Ko Mātai te Maunga Tapu
Ko Hokianga te Moana Nui
Ko Ngātōkīmatawhaorua me Māmari ōku Waka
Ko Ruanui rāua ko Nukutāwhiti ōku Rangatira
Ko Motukaraka te Marae
Ko Ngāi Tūpoto te Hapū
Ko Te Rarawa me Ngāpuhi ngā Iwi

From attending the White House Tribal Leaders Gathering in Washington, D.C., in 2015 to receiving a medal from Her Majesty Queen Elizabeth II at Buckingham Palace in 2018 and being named on the Forbes 30 Under 30 Social Entrepreneurs Asia/Pacific List in 2019, Ezekiel Raiu is no stranger to dreaming big and thinking outside the box.

Ezekiel grew up in the Far North community of Whatuwhiwhi in Doubtless Bay after his whānau moved north from Tokoroa. He was named Head Boy of Taipa Area School in 2015 and was the first in his whānau to attend university in 2016, where he studied for a Bachelor of Business. After completing his degree in 2018, Ezekiel began working for Te Rau Ora as the Programme Lead for Tū Kotahi, a peer-to-peer support programme he co-designed while still at school.

Ezekiel is currently the Chief Executive of Te Rourou, One Aotearoa Foundation, and works to contribute to an equitable Aotearoa for all rangatahi.



John Minty

John is the current owner of the Splore Music and Arts Festival and has been involved with the event since 2006. He has previously worked as a probation officer, journalist, magazine publisher, and music venue owner. An activist since the early 70s, John was an original associate of the Polynesian Panthers and later served as the editor of the multi-lingual Mana Newspaper. He has a long-standing interest in spoken word, having supported the South Auckland Poets Collective with their initial activation at Splore 2010 and featuring Rehekōrero at Splore 2024.



Grace Allen

Mokopuna mai ai i Punakiao, Ko Hinemanu e tararere nei.
Kōkiri, tākiri i a Ngaruroro e utaina ki Ōmahu.
Tiu ake i ngā pae maunga ki ngā wai tuku kiri o Kauangaroa.
Mauri ora ki ngā whenua o ngā tūpuna.

Grace's background spans Māori land, corporate tax, and strategic planning as a Chartered Accountant. She has had the privilege of working with Māori organisations over the last nine years, helping them rise to the challenge of meaningfully operating in a values-driven way within a Western regulatory system. In this role, her focus is on the aspirations of the people they serve and on growing the capability of young people. Ka pupuri mātou i te whāriki aroha mō ngā rangatahi, kia pakari tō rātou ake tū.



Stevie Davis-Tana

Stevie Davis-Tana is a māmā, creator, and spoken word poet living in Tāmaki Makaurau. She has a BA and a Masters, has travelled to Canada for an Indigenous writer's residency, and has produced a spoken word poetry visual album. She is passionate about creativity, identity, storytelling, and mana motuhake!



Mark Esekielu

Mark Esekielu, Senior Manager for Mental Health and Addictions at Le Va, brings over 29 years of dedicated experience to his role, encompassing the community, social services, and mental health sectors. A New Zealand Samoan, Mark's journey is marked by a deep commitment to supporting youth and developing others. He holds qualifications in Psychology, Child and Adolescent Mental Health, Social Work, and Business, blending his cultural, clinical, and strategic insight.

Raised in Tāmaki Makaurau amidst a vibrant Pasifika community and a large extended Samoan family from the villages of Fasito'otai and Letogo, Mark's upbringing has profoundly shaped his commitment to working with Pasifika people. His approach is deeply influenced by his Samoan heritage, where the principle of leadership through service, "O le ala i le pule o le tautua," guides his professional and personal life. With fifty years of life experience, fifteen years of marriage, four children, and four cats, Mark's commitment to his family and community continues to underscore his dedication to fostering environments where individuals, particularly Pasifika youth, can achieve their full potential.

CEO Message



**"Mā te
huruuru
ka rere te
manu,"**

"Adorn the bird with feathers so it may soar"

What an incredible year of growth and movement. Action Education has finally left the nest. **"Mā te huruhuru ka rere te manu,"** meaning **"Adorn the bird with feathers so it may soar,"** this highlights the importance of equipping young people with the skills and knowledge they need to thrive independently. This was also our journey with Youthline, over the last 43 years and although we will remain forever whānau we have begun our journey of independence.

As of the 28th September 2024 Action Education's Board that we shared with Youthline, stepped down in order for our newly appointed Board to take control. This provides Action Education with the exciting opportunity to evolve in a way that is specific to the needs of the communities we serve and thrive under a fit for purpose governance structure.

I extend a huge mihi of thanks to Shae Ronald and Youthline Auckland Charitable Trust for their leadership, friendship and fellowship over the last 43 years.

I am so excited to introduce our new board in this annual report. I again send a huge thank you as they step in to guide our waka into a prosperous future. Massive thank you to MAS Foundation and J R McKenzie Trust for supporting us to make this necessary transition and to all of our funders and stakeholders who continue to support us.

It has been a very steep learning curve stepping out of my role as Manager to Chief Executive. This has been a big stretch but a very rewarding one and one that I am more than ready for. I send a huge thank you to my incredible team who have all stepped up to enable this to happen. I send a special thank you to my right hand person and best friend Julia Rahui who has stepped in to her role of Funding and Project Manager; we are in such great hands.

This transition to self-determination comes at such a turbulent time nationally and globally. As we know, the world is undergoing huge conflict, whether this is the threat of war or the growing divides we are seeing every day in the communities we serve. After living through the global pandemic and working through the impacts of this we continue to see huge challenges with mental health, climate change and the cost-of-living crisis.

This has burdened our rangatahi with stress levels we have rarely seen in recent generations. Supporting our young people and their respective whānau to navigate these perilous times has never been more important.

In a time when understanding and unity are more necessary than ever, Action Education's platforms build bridges across cultures, faiths, and experiences through creative expression. It fosters essential conversations about identity while promoting compassion, inclusivity, and meaningful dialogue.

Despite the challenges we are seeing in the funding environment, organisationally we are stepping up to this new front line. With our board leading the way and our village behind us we will support our communities to not only survive but also to thrive.

"He reo rangatahi, he ao hurihuri. The voices of youth keep the world turning."

Ramon Narayan
Chief Executive

Message from our Chairperson



*E ngā rangatahi, e ngā kaiako,
e ngā whānau, e ngā hoa tautoko katoa
—tēnā koutou katoa.*

It is a tremendous honour to write this message as the inaugural chairperson of Action Education's independent Trust Board. This annual report marks both another year of incredible mahi by our team and community, as well as the birth of a new chapter in our Action Education's story—our emergence as a self-governing, self-determining organisation.

We are so grateful to our big sister organisation Youthline for the decades of service and shared leadership, and we know this transition to independence honours both our history and our potential. For our team, taking this step into the unknown represents more than organisational change—it embodies the very values we hope to instil with our rangatahi: the courage to find our voice, claim our space, and take the lead all while honouring those who have helped shape you.

I want to mihi to the members of our awesome new Trust Board for their aroha and dedication to the communities we serve. Our Board is creative and diverse with expertise in education, music, youth development, mental health, te reo Māori, hosting epic events, art, media and Te Tiriti o Waitangi. We are Māori, Pasifika, people of colour and Tangata Tiriti and in this way we reflect the beautiful diversity of the young people we work for. It is in this way that we can ensure decisions shaping Action Education's future understand the lived experiences of our rangatahi and promote justice in our wider community.

As our CEO has mentioned, the world our rangatahi inherit is complex — shadowed by international tensions, environmental fragility, and deepening social fractures. Our young people carry burdens that previous generations rarely faced. Yet through spoken word poetry, they transform pain into power, isolation into solidarity, and uncertainty into revolutionary expression.

This year, our Action Education team hosted over 7786 participants and 9,790 audience members throughout our programmes. Behind each of those numbers is a young person who has found their voice, teachers and mentors who believed in their potential, and a community that gathered to listen. From the packed auditoriums of WORD The Front Line to the intimate circles of our community workshops, our Action Education team has cultivated spaces of safety where genuine expression flourishes.

And so we must throw up our hands for the incredible work of our legendary team at Action Ed! To our newly minted Manager-turned-CEO, Ramon Narayan, whose leadership has navigated this pivotal transition with wisdom and heart, tēnei te mihi nui ki a koe e te rangatira.

To our amazing facilitators, administrators, coaches, mentors, as well as to our extended whānau of teachers and kaitautoko who continue to show up for the future and for the art —your commitment to nurturing young voices creates ripples that extend far beyond anything we could ever measure. He mahi rangatira, he mahi hōhonu, tēnei te mihi nui ki a koutou e ngā pou kaha o tō tātou whare!

To our funders and supporters, your belief in our mission enables us to continue this vital work. Especially during challenging economic times. Your investment acknowledges that creative expression isn't a luxury — it is essential infrastructure for vibrant healthy communities and resilient young people in the face of our changing world.

Most importantly, to the rangatahi—you are the heart of everything we do. Your courage to step onto stages, share your truth, to support one another reminds us why this mahi matters. Your willingness to stand vulnerable before audiences, to craft truth from chaos, and to support each other's artistic journeys demonstrates leadership beyond your years. You don't merely hold promise for tomorrow—you are creating change today.

As we move forward as an independent organisation, we do so with deep gratitude for our roots and boundless excitement for our potential. We are not just facilitating poetry competitions or running workshops—we are nurturing the next generation; growing confident voices, critical thinkers, and compassionate leaders.

Kia kaha, kia māia, kia manawanui.
Be strong, be brave, be steadfast.

Ngā mihi nui,
Erin Matariki
Chairperson, Action Education Trust Board

The Stats



Total Events

23



Total Workshops

746



Total Event Audience

2004



Total Workshop
Participants

7786



Total Audience

9790

Exciting Transition for Action Education

In October 2024, Action Education embarked on an exhilarating journey as we separated from our sister organization, Youthline, and established our own independent Trust Board. After nearly 50 years of collaboration, this transition marked a significant milestone for us, empowering our organisation to thrive with dedicated focus and support tailored to our unique mission.

We introduced a passionate team of new Trustees, carefully selected for their professional expertise, sector relationships, and deep understanding of youth and community needs. Reflecting the diverse communities we serve, 80% of our new Trustees are Māori, Pasifika, and People of Colour, with strong representation from Northland and South Auckland. This fresh leadership brings a wealth of knowledge and a commitment to inspiring positive change among our priority groups.

Since our inception in 1981, we shared a Trust Board, office space, and operational systems with Youthline. We recognised that this transformation was a process that took time as we navigated this transition together. Youthline remained dedicated to supporting us in successfully establishing our independence, ensuring we built a strong foundation for the future.

The possibilities of having a well-resourced and focussed Trust Board are truly exciting, especially in the context of ongoing challenges in funding and the myriad of social, environmental, political, and global issues impacting our communities. We feel optimistic about this fundamental organisational transformation and celebrate the bright future ahead for Action Education.





Word The Frontline

Tamaki Makaurau 2024

2024 marked the eleventh year of our flagship programme, WORD – The Front Line. The programme continues to serve as a key component of artistic and youth development in Tāmaki Makaurau. Year 11 saw no difference, with over 350 workshops provided across the regional qualifiers all the way to the finals. The programme was able to both nurture and challenge our participants, pushing them to new levels of creativity and expression.

From a participant's standpoint, WORD – The Front Line continues to foster aroha and community while encouraging creativity, as reflected in the feedback from an alumni of the 2024 cohort.

"Coming into WORD – The Front Line felt unreal, to be honest! I wasn't sure about poetry but seeing everyone pour their heart out onto the stage deeply inspired me! If I could summarize the Action Education team with WTF, it would be 'Tautua'—service to their people, and I'm proud to be a WTF! alumni!"

– Taylah Stewart, Onehunga High School WTF! Team 2024.



This sentiment is echoed by Famida Adam, HOD of English at Zayed College for Girls, who said: "On behalf of Zayed College for Girls, we extend our heartfelt support to the Action Education Organisation in recognition of its vital role in fostering artistic expression, cultural dialogue, and community engagement. As a Muslim community, we deeply value the power of words and storytelling—foundational elements in our faith and history. Poetry and spoken word have long been instruments of truth, resilience, and social justice, echoing the voices of those often unheard. Action Education has provided a platform where diverse narratives are celebrated, and we stand in solidarity with its mission to amplify voices, particularly those from marginalised backgrounds. In a time when understanding and unity are more necessary than ever, spaces like the platform Action Education creates build bridges between cultures, faiths, and experiences. By encouraging creative expression, it nurtures critical conversations on identity, justice, and spirituality—values that align with our commitment to compassion, inclusivity, and dialogue. We are eager to collaborate, support, and uplift this initiative in any way possible. May this space continue to flourish as a beacon of creativity, empowerment, and positive change."



For the third time, we held four successful regional heats across four nights in the audition process for WORD – The Front Line, with the demand for our young people to have their voices heard continuing to expand. This format allowed students and teachers flexibility for scheduling and availability during the school year. Due to Te Puea Marae undergoing renovations since 2023, we have continued to redevelop our relationship with Te Mahurehure Marae, hosting Rā Toi Kupu for a second year.

Slam Camp was hosted at Peter Snell Youth Village for the second consecutive year. This provided a great opportunity for our poets to upskill under the mentorship of established artists, intermingle with alumni of our programme, and share poetry with new people.

The two semi-final heats were held at Auckland Live and Māngere Arts Centre, illustrating the development of our young people in the programme and in life. Both nights saw

rooms filled to capacity with friends, whānau, and community members. More than the competition itself, the Grand Slam took place at a sold-out Hunua Room at Auckland Live, boasting well over 400 attendees and featuring a performance from the champions of WORD Ōtautahi, Cashmere High School. From over 40 schools in our regionals to 14 advancing teams, it all came down to six finalist teams from Diocesan School for Girls, De La Salle College, Zayed College for Girls, Alfriston College, Ngā Puna o Waiōrea, with Auckland Girls' Grammar School becoming the WORD – The Front Line Champions for the first time.

We extend a huge thank you to Creative New Zealand and Auckland Regional Arts and Culture for your belief in us and for championing our young people so they may thrive!

WORD – The Front Line Ōtautahi 2024

Ōtautahi celebrated its second year of competition with a bang, expanding from the original six teams to eight for this year's competition! While two teams had to drop out before the semifinals, the six schools that stayed in the competition developed their artistry and performance, rocking in a packed Tūranga (Central Library) in front of an energetic crowd. Five teams advanced to the finals at The Piano Theatre.

We'd like to thank Te Aratai College, TKKM o Te Whānau Tahī, Villa Maria College, Cashmere High School, Christchurch Girls' High School, Haeata Community Campus, Papanui High School, and Ao Tawhiti for being part of the programme in varying degrees for this second year.

A big mihi to WORD Christchurch Festival and The Piano Theatre for having us and taking care of us. We really value and appreciate your teams and spaces. Thank you to Hester Ulyart and Amy Pauleson for being amazing coordinators and for holding a rich, inclusive, and vibrant space for our poets to thrive.

A huge shoutout and thank you to our coaches and teachers for guiding and supporting your teams and students! Thank you so much to our stacked judging panel: Nathan Joe, Danielle O'Halloran-Thyne, Regan Graham, Kupu Stokes, and Talia Stanley. Your expertise and feedback are exceptional and greatly appreciated. Thank you to Black Silt Photography and Cross Polynate for beautifully capturing the evening! Big ups to DJ Big Music for keeping the vibes going!

A special mihi to Rata Foundation for continually supporting our young people, communities, and spaces.



Teachers' Night 2024

The 2024 Teachers' Night was a resounding success, with a full house in attendance. Action Education had the opportunity to connect with our most essential partners during an evening filled with exclusive performances, professional development, delicious kai, and insightful information about this year's WORD – The Front-Line programme.

One of the most exciting aspects of this year's Teachers' Night was the significant number of new teachers in attendance. Their presence underscored the enduring legacy and impact of WORD – The Front Line, a programme made possible only through the belief and dedication of the teachers with whom we collaborate.

The event featured captivating performances from Mount Roskill Grammar, New Zealand National Poetry Slam Champion and long-time WORD – The Front-Line coach Marcus Mackenzie, as well as the 2023 WORD – The Front-Line Champions, Rehekōrero.

We extend our heartfelt gratitude to Nualān for providing the music and to The Flagship, Sustainable Coastlines Education Centre for hosting this special event, as well as for their continued partnership and support.



Workshops

Action Education uses the power of Spoken Word poetry to create transformative experiences for rangatahi across Aotearoa. Our workshops are designed to reach communities most impacted by social, educational, and health inequities providing them a safe space to articulate their kōrero.

Many of the young people we work with come from environments shaped by the lasting effects of colonisation. They face systemic barriers and often occupy spaces where their voices are not heard, valued, or reflected. Our programmes are about shifting that reality.

Facilitated by our experienced team of artists and educators, our Spoken Word workshops offer young people a platform to express themselves, reclaim their narratives, and explore their identities. They learn to use poetry to navigate and respond to the world around them—sharing their stories in ways that build confidence, creativity, and critical literacy. In the past year alone, our team carried out a total of 746 workshops enabling us to reach over 7700 participants! Evidently spreading our work through the motu to enable young people to access creativity and share their stories the way they want to share them.

Spoken Word is more than an art form—it is a vessel for change. It combines poetry, movement, and theatre to activate dialogue and connection. As one student shared, **"It was inspiring and emotional. I found time to truly understand who I am. I'm truly grateful."**

These workshops are a powerful expression of our vision: to enable young people to express their authenticity and grow a strong community that supports them.



Alumni Spotlight

Lex Shoemark

Poetry wasn't always part of the plan for Lex Shoemark. A self-described "sports kid," he had a natural flair for writing and a vivid imagination, but life moved to a familiar rhythm: school, basketball training, home.

His family imagined a more traditional path - something hands-on, like physical or labour work. That trajectory began to shift when a longtime school friend reminded Lex of a memory from years earlier: the two of them writing raps and freestyling at the back of the classroom.

His friend's relentless encouragement to explore poetry led to Lex being signed up for WORD -The Front Line with little warning or context. "I actually didn't have any clue what it was about," Lex admits. "I sort of got signed up in the moment and just learned as I went." It left him torn - poetry practices clashed with basketball training.

"It was kind of like a High School Musical moment," he laughs. "There was a bit of choosing between one thing or the other."

But the choice to pursue poetry paid off.

His first Front Line performance, at just 15 years old, representing Aorere College, sparked something. On stage, something clicked - and Lex never looked back.

Today, Lex is a mentor, coach, and multi-slam champion.

"I still feel semblances of that first time performing, every time I get on stage, even now," he says.

"I remember being intimidated, but the space was so open and welcoming. Even though I was completely new, I felt like doing my best was enough. I was comfortable being uncomfortable. That feeling really shaped my journey."

Lex's debut was as part of a five-person team, where he spoke about growing up in South Auckland.

"What The Front Line gave me was access," he reflects. "It created a space of my own, a creative outlet outside of school where I met the best people. And from that point, I've been able to grow into the poet and performer I am today."



He returned to the competition in Years 12 and 13, helped start a poetry club at school, and began performing beyond the classroom - at open mics, showcases, and slams across the city.

As the confidence and opportunities grew, so did the artistry. Today, Lex's creative talents extend into theatre and acting.

One standout performance even drew praise from a reviewer, who said his stage presence could have, "Eminem paying attention."

"Poetry gave me a way to say the things I needed to say," he says. "And when you get offstage and someone tells you they felt it; That's...that's everything."

And the support he experienced in the beginning of his journey has not stopped. Action Education continues to offer gigs, spaces to write and perform, and a community to lean on.

"They don't disappear after high school. If you want to keep growing, they'll keep showing up for you."

Due to ongoing health challenges, traditional work has become difficult, however poetry has remained a lifeline.

"It's my main source of income now," Lex explains. "But more than that, it's how I stay active and engaged with the world. It gets me out of the house. It keeps me moving."

Despite national performances and a name that carries weight in the scene, Lex still sees himself evolving.

"I still feel like that kid walking into the room for the first time," he says. "I've just got a few more shows behind me now."

Asked what he'd say to someone afraid to share their voice, Lex doesn't hesitate.

"The fear doesn't go away. You're never not scared. But if what you've got to say matters to you, then it's worth saying. Take the space while you have it."

Alumni Spotlight

Aryi Koko Tefler

"It was the best experience of my whole high school career. Period."

That's how Koko Telfer describes performing in Word - The Front Line.

For someone who had been writing since Year 7, nothing else in high school came close to the impact of stepping onto that stage.

"It was just the ultimate highlight," she says. "I met so many amazing people through doing it - people I never would have crossed paths with otherwise. Some of them are still my closest friends."

Raised across South Auckland, Koko was always a writer.

Her love for poetry emerged early and was nurtured over time, a way to process life and express what she couldn't always say out loud.

By the time she reached high school at Auckland Girls' Grammar, Koko wanted to share her work.

"I actually started a poetry club just so I could compete," she explains. "I'd tried for a couple of years, but things kept getting in the way - lockdowns, admin issues. By Year 12, my last year of school, I just made it happen."

Her determination brought a team of four together and led them to Word - The Front Line stage. They trained, wrote, and performed - each person bringing something different.

Koko led workshops to help the team find their voices and figure out what they wanted to say.

"We wrote about everything," she says. "Our relationships with school, our cultures, our families. I wrote about being half-caste and what it's like not feeling 'enough' for either side."

Although nervous, Koko had already tested the waters of performance through Action Education's community open mics.

"I think I was 14 or 15 the first time I performed," she remembers. "It was a piece called The Island Way, about growing up with strict parents. My voice was shaking, I was so timid, but I did it."

The Front Line gave Koko the chance to develop her voice on a larger scale.

"As much as it's a poetry competition, it's also a youth leadership programme," Koko says. "It helped me come out of my shell and connect with others. I used to be super shy and introverted, but this pushed me out of that comfort zone and has helped me take more initiative in my day-to-day life."

Now out of high school, Koko still performs and continues to show up to Action Education events.

"It's like a family reunion every time," she says. "Everyone supports each other, and it's because of Action Education and The Front Line that I found that space."

Her writing has evolved, too.

"When I first started, I went through the love poem phase, as you do," she laughs. "Now I write a lot about what it means to be Pasifika and mixed. I also try to write about joy and gratitude."

Still, she has no plans to turn poetry into a career.

"I feel like tying it to money would change my relationship with it," she says. "For me, it'll always be something I do for myself. It'll be in my notebooks, in how I speak. It's just part of how I move through the world."

It's also a way to stay connected to her roots.

"As Pasifika people, we're storytellers by blood," Koko says. "Poetry lets me carry that tradition in my own way. Some people use film or music. Mine is through spoken word."

She's also seen the real impacts it has had on others.

"One of my teammates joined because she wanted to improve her English and find better ways to spend her time. By the end, she had some of the best grades in her class and was performing her poetry at church. That's the kind of impact it had."

Koko's advice for others is simple.

"Just start. You'll always be nervous. That doesn't mean you're not ready. Take the mic. Say what you need to say."

"For me, it'll always be something I do for myself. It'll be in my notebooks, in how I speak. It's just part of how I move through the world."



Ngā Toi O Rongo

The Ngā Toi O Rongo programme has made significant strides this year in fostering creative expression among rangatahi Māori in Tāmaki Makaurau and Te Tai Tokerau. In Tāmaki Makaurau, 156 young people participated in 25 workshops with local kura and community groups, including Te Kura Kaupapa Māori o Ngā Maungarongo and Ngā Puna o Waiōrea.

In Te Tai Tokerau, the programme engaged 398 rangatahi through 24 workshops in kura, schools and institutions such as Whangārei Girls High School, Kaitia Campus, Oturu School, and Bay of Islands College. This collective engagement demonstrates a strong commitment to empowering rangatahi Māori through the art of spoken word poetry.

Spoken word poetry serves as a vital medium for storytelling, allowing rangatahi and whānau to express the unsaid and connect deeply with their culture. For Māori, this form of expression is not new but a continuation of traditional oral practices such as karanga, whaikōrero, mōteatea, and haka. It carries the legacies of ancestral wisdom and facilitates a connection to identity, land, and the spiritual world. The workshops provide a culturally safe and inspiring environment where rangatahi are encouraged to explore their heritage and articulate their challenges, ultimately enhancing their individual and collective well-being.

The Ngā Toi O Rongo initiative goes beyond poetry; it seeks to revitalise the Māori language and culture while nurturing creativity and cultural identity. The programme empowers rangatahi to reclaim their voices, express their stories, and engage meaningfully with their past and future. By fostering courage and self-advocacy, Ngā Toi O Rongo inspires the next generation to stand up and share their narratives, reinforcing the importance of their voices in shaping their communities and identities. This commitment to empowering Māori youth through the arts continues to be a cornerstone of our mission.

Stand Up Poetry

Stand Up Poetry (SUP) remains a cornerstone of Aotearoa's spoken word landscape — one of the longest-running open mic spaces in the motu. Born from the vision of Action Education and the South Auckland Poets Collective, SUP was built to ensure live poetry stayed open, alive, and accessible to the many communities that breathe life into Tāmaki Makaurau.

This year added another rich chapter to the SUP story — a season of reconnection, resilience, and return. We saw our community grow once more, with attendance climbing to approximately 450, topping the previous year and establishing a renewed hunger for live, local storytelling which is alive and well at every SUP.

Across 2024, Action Education hosted 10 open mic events in 6 unique venues, with Youthline Manukau anchoring much of the mahi. 90 poets took to the mic with 17 local featured poets — some emerging, some well-seasoned — each one offering up their truth, holding space for vulnerability, laughter, healing and celebration.

Among our most treasured moments were our kaupapa Māori and Moana-led gatherings: the Mahuru Māori Spoken Word Showcase at Auckland Central Library, and Te Moana-nui-ā-Kiwa Open Mic in Onehunga — both honouring the cultural depth and ancestral stories carried by our SUP whānau.

SUP 2024 was a reminder that poetry still matters. That a mic, a stage and an open heart are all we need to gather, listen and be changed. That our voices, in all their forms, continue to revolutionise the spaces we stand in.



Te Moana-nui-ā-Kiwa: Spoken Word Open Mic

Being situated in a mecca of Pasifika heritage and culture, Action Education honoured this community by holding its first Te Moana-nui-ā-Kiwa: Spoken Word Open Mic. This open mic focused on uplifting and supporting our Pasifika and Moana-based artists in Tāmaki Makaurau. The event featured over 12 performers, mixing poetry, rap, and song into one lineup, with the highlight being the WORD – The Front Line Champions, Auckland Girls Grammar.

A special thanks to Nualān, who was the DJ for the event and to Eric, who MCed, as well as to the Onehunga Community Centre and its staff for hosting us. Most importantly, we thank the Auckland Heritage Festival for collaborating on the creation of this event.



Mahuru Māori Spoken Word Showcase

Although it is a new art form, Spoken Word Poetry is a practice that is already deeply embedded in Te Aō Māori. Like karanga, whaikōrero, waiata, and mōteatea, Spoken Word Poetry addresses who we are, where we come from, the world around us, and the issues impacting our communities. It is a resilient, dynamic and ancient art form, combining poetry, theatre and movement to engage audiences of all ages from a wide range of backgrounds. Our Mahuru Māori Spoken Word Showcase displayed exactly that!

A night of back-to-back performances celebrating Te Wiki o Te Reo Māori featured 12 of our rangatahi Māori poets gathered at Auckland Central Library, including the 2023 Word – The Front-Line champions: Rehekōrero. Young Māori have gravitated strongly toward Spoken Word Poetry in recent years as it encourages them to engage with their traditional practices, history, triumphs, challenges, whānau and selves. We've had the absolute privilege of working with these poets over the past decade, helping to platform and amplify these young voices. This speaks to the longevity and community this ignites within our rangatahi Māori in this art form.

We are proud of all our poets who consistently stand in their mana every time they grace the mic! Mauri ora!



Slice of Southside

Slice of Southside had its fourth iteration in a new venue, featuring a mix of old and new faces participating! This event focuses on our exceptional writers, poets and rappers from South Auckland. In this fourth instalment, the showcase displayed the breadth and depth of talent that South Auckland artistry has to offer.

Held at the new venue of C3 Church in Manukau, the event was spearheaded by the dynamic MC duo of Luani Nansen and Noah Brown, featuring a mix of 10 acts. The performances included song, poetry, and rap, with the current champions - Auckland Girls Grammar School, as the main headliner.

Thanks to the exceptional skills of our friends Rueben and Peniel, the entire showcase was documented and is now available to view on our YouTube channel. We are grateful for your mahi, team! We also send a big mihi to the crew at C3 Church for hosting us and for being a space where we can continue to develop a connection with our South; we can't wait for our next collaboration. Special thanks to Foundation North for making all of this possible. Finally, to the poets of South Auckland who stoke this creative flame, we salute you.

Action Education continues to shed light, hold space and provide a platform for our beloved South Auckland community, which contributes a significant portion of participants in our mahi, but more importantly, to the wider landscape of arts in Aotearoa. This showcase serves to nurture and support the creative essence that derives from our South Auckland region in a rich and mana-enhancing way.

Word Summit

The Word Summit is our annual national spoken word poetry conference for youth — a powerful day dedicated to amplifying rangatahi voices through poetry, connection and creative expression. It's a space where young people are seen, heard and celebrated.

In April 2024, we welcomed over 90 students from across Aotearoa — from Kaitaia to Ōtautahi — each one bringing their stories, their energy and their wairua. As always, we began with whakawhanaunga-tanga, grounding the day in shared kōrero, building bridges between strangers who quickly became whānau.

The day unfolded with electric performances and workshops led by some of Aotearoa's most dynamic and inspiring artists — including our 2023 WORD – The Front-Line champions: Rehekōrero, A.R.K, Manaia Tuwhare-Hoani, Stevie Davis-Tana, alongside powerhouse artists Bailey Wiley and MELOWDOWNZ. Each performer/facilitator, deeply connected to our Action Education whānau, brought their own approach to storytelling — from meticulously crafted lyricism to the soul of spoken word. The perfect way to launch a new season of events, fully immersed in the craft.

A massive shoutout to Domino's NZ for fuelling the kaupapa once again — your support means the world to us!

We are constantly reminded that these moments wouldn't happen without the unwavering support of our incredible teachers and kaimahi, who show up, lean in and create space for their students to be bold. But the real stars of the Word Summit are always our rangatahi — the way they rise, speak their truths and hold their own with pride and purpose.

The 2024 Word Summit was more than a conference — it was a movement. A call to courage. A celebration of voice. A reminder that poetry is more than just words — it's a force for belonging, transformation and deep connection



South Leadership Summit

The South Leadership Summit was a collaborative project between Action Education and Fonua Ola, designed to address the developmental needs of our Pasifika young leaders through the vehicle of poetry.

The event brought together over 80 Pasifika students in leadership positions from 10 schools across Tāmaki Makaurau and Ōtautahi for writing, performance and rap-based workshops that pushed and examined their ideas of leadership. With the overarching whakataukī of the summit being "E pala le ma'a, ae le pala le upu — even stones decay, but words remain," students had time to reflect on how their words as leaders can create an impact that transcends time.

A massive thank you to our amazing facilitators: Denyce Su'a from Massive Theatre Company, Noah Tauti and Luani Nansen from Te Karanga Trust, Melodownz, Zech Soakai and Daisy Speak, who flew up from Ōtautahi with students from Christchurch Girls' High School.

And a huge fa'afetai tele lava to Foundation North for helping to fund this initiative and to Peniel and his amazing team at Fonua Ola for collaborating on this project.



Road to Waitangi

On February 4th, we embarked on a significant journey to the Waitangi Treaty Grounds, focusing on Indigenous governance, youth voice and to participate in the Waitangi Festival. Our team stayed in Kororāreka (Russell), where we were fortunate to be accompanied by talented poets Manaia Tuwhare-Hoani, Arihia Hall, Jai Selkirk and the rangatahi poetry collective, Rehekōrero.

Upon our arrival and after settling into our accommodations, we focussed on preparing for the upcoming days, emphasising whakawhanaungatanga. We explored the historic area of Kororāreka, New Zealand's first capital, immersing ourselves in its rich heritage. We then prepared dinner for the entire team and engaged in wānanga regarding Indigenous sovereignty, leadership, strategy and our intended activities for the following day.

The next morning, we began our journey with a ferry ride to the Treaty Grounds, where we hosted an open spoken word poetry workshop for festivalgoers. This workshop fostered an intimate environment, allowing participants to write and share meaningful stories.

The day concluded with reflection and gratitude, as we were energized by the vibrant cultural atmosphere of the festival. This experience facilitated a deeper understanding of the significance of Te Tiriti o Waitangi and its implications for both tāngata tiriti and tāngata whenua.

The following day commenced early, as our team and the poets once again travelled to the grounds for Waitangi Day 2025. We witnessed the preparation of large groups of kaihoe getting ready to join the fleets of waka that would soon grace the harbour.

At the Waitangi Forum speakers' tent, we listened to insightful presentations from Toitū te Tiriti activists Eru Kapa-Kingi, Samah and Pere Huriwai-Seger. Their discussions provided a valuable perspective on contemporary issues relating to the Te Tiriti o Waitangi and the government.

Our remarkable poets also performed, sharing their work rooted in Māoritanga and their personal whakapapa. The engaged audience expressed appreciation for their spoken word, with many attendees offering thanks afterward. This day was marked by connection, as we bonded over our shared commitment to this vital kaupapa.

We were also privileged to witness a stunning performance by Te Uri o Manumanu Kapa Haka, followed by a variety of delicious kai that was generously offered. The harbour was alive with onlookers as the fleets of waka, filled with kaihoe chanting and singing, took to the water. Tino Rangati-ratanga and He Whakaputanga flags waved in the breeze as we celebrated the culmination of this cultural experience.

That evening, we returned to our accommodations, reflecting on our time together and the lasting connections we had formed with the culture, history and each other. Overall, this experience was profoundly enriching for the entire team present, fostering lifelong friendships and cherished memories.

Upon our return to Tāmaki Makaurau, we held a post wānanga debrief. The rōpū got back together and we discussed how we felt at Waitangi, what we loved, what as Māori uplift us what enhanced mana, what as an organisation we could do to better support rangatahi Māori and their whānau. The insights were fascinating and powerful, and we will use this kōrero to inform our future indigenous led organisational strategy which we are working on with our newly established Trust Board.

We thank Te Rau Ora Rangatahi Development Fund which enabled our rangatahi to lead, influence the design, development and delivery of services. Thank you for supporting this empowering and significant wānanga. Mauri Ora



Our Village

Our Team



Ramon Narayan
CEO | Poet

Ramon is the CEO of Action Education. He is a poet, DJ, youth worker and facilitator who has worked with young people for the last 25 years. In 2016 he was honoured with a Local Hero award for his work in the community. He is the co-founder of the South Auckland Poets Collective and co-founder of Word-The Front Line, New Zealand's biggest poetry slam. Youth work and poetry have taken him around the world multiple times. He is the dad of a Greyhound called Maui, a self-confessed vinyl junkie, beer nerd and cheese addict.



Julia Rahui
Funding and Projects Manager | Co-Secretary

Julia comes from a large Irish and Māori whānau and is passionate about tikanga, hauora, te taiao, social justice and community connection. Julia holds whakapapa in Te Tai Tokerau (Te Roroa Iwi) and is particularly interested in indigenous knowledge systems, practices, their positive impact on human development and ecologies of love.

Julia works as the Action Education Funding and Projects Manager and she manages several key stakeholder relationships. She has more than 23 years' experience in the non-profit sector. Her career spans project management, youth development work, coordination of a community radio station and art gallery and experience working in Vanuatu for an indigenous music and arts trust. Outside of Action Education Julia is currently undergoing an apprenticeship to learn about Romiromi and Māori traditional healing.



Talia Stanley
Poet | Youth Worker | Facilitation Lead

Talia is a Samoan youth development worker, writer, and spoken word artist from Tāmaki Makaurau. She is the 2024 New Zealand Poetry Slam Champion and has over 12 years of experience as a spoken word poetry facilitator and currently works for Action Education running workshops across the country. She has performed at numerous festivals and theatres in Aotearoa and is a three-time Jafa Poetry Slam Finalist.



Ken Arkind
Youth Development Worker | Poet | Author | Graphic Designer

Ken Arkind is a poet and performer with over 20 years of experience as a spoken word arts educator and youth worker. A United States National Poetry Slam Champion Ken has performed his work and facilitated workshops across the world.

He helps produce the NZ National Poetry Slam and is the author of two collections of poetry. Ken has appeared on multiple TEDx Stages, HBO, NBA.COM, The Huffington Post, TVNZ and in numerous anthologies.

He is deeply passionate about the power of using creativity as a tool for youth development and social change and believes that art can be a compass that we use to navigate the world. He holds a Bachelor of Creative Arts in Creative Writing from the Manukau Institute of Technology.



Hannah Feenstra
Administrator | Organiser | Good Sort

Hannah supports organisations doing great things to achieve their purpose and vision. Her varied career includes work in both the non-profit and business sectors from conservation, co-housing and the coffee industry to mobility support services and running her own cafe. She enjoys the challenge of finding solutions and strategies that support, enable and empower people. She holds a Bachelor of Health Science from the University of Auckland and a Masters in Entrepreneurship from the University of Otago. In her spare time, you will find her cooking, eating or exploring Aotearoa's beautiful outdoors.



Cristián O Ryan
Funding Coordinator

Cristián is originally from Chile, with ancestral roots in Italy and Spain. His water is the Pacific Ocean and his mountain is the Cordillera de los Andes. Cris arrived in Aotearoa in 2023 with his wife and their two daughters (six & eight). They now call Whakatū (Nelson) home and feel blessed by the warm welcome they've received from the local community.

An Edmund Hillary Fellow, Cristián has blended experience across corporate, NGO and entrepreneurial sectors. He is passionate about using creativity and innovation to empower communities and believes strongly in the potential of young people as agents of positive change.

At Action Education, Cris supports fundraising strategies, fostering sustainable growth through strategic partnerships and diversified funding streams.



Eric Soakai
Poet | Youth Development Worker | Facilitator

Eric Soakai (they/him) is a Samoan (Poutasi/Falealili) & Tongan (Pangai/Ha'apai) poet/ performance artist, born and based out of South Auckland. They are the 2019 National Poetry Slam (NZ) Champion, recipient of the Indigenous Story Telling Residency in Banff, Canada (2020) and has works published and forth coming in various journals including the New Zealand Performance Poetry Anthology (AUP 2022). Eric currently works as a poet and youth worker for Action Education where he creates and facilitates poetry-based workshops for youth across the motu to help pass on the artistic tools that have helped him stand proudly as the person he is today.



Sheldon Rua
Poet | Youth Development Worker | Facilitator

Sheldon is a proud Māori/Samoan (Waikato/Tainui, Sapapali'i) artist and storyteller deeply rooted in connection and authenticity. With a background in youth work, spoken word poetry and street dance, he has thrived in Aotearoa's arts community for well over a decade as a performer, mentor, cultural advocate and community builder. No stranger to the global stage, he has represented Aotearoa at some of the biggest Street Dance Festivals in the world, while working as a poet and facilitator with Action Education, continuing to elevate his craft in his community. His work is driven by a deep commitment to honour our stories, uplift our people and strengthen our place across the world.



Koromiko Jacob-Williams
Poet | Youth Development Worker | Facilitator

Koromiko Jacob-Williams is a poet, facilitator, aspiring filmmaker, and creative who hails from Tauranga Moana (Ngāi Te Rangi, Ngāti Ranginui) but currently lives in West Auckland. They are a member of the spoken word poetry group Rehekōrero, who have performed and competed at the National Poetry Competition, Laneway Music Festival, Splore Festival and more. They write about Te Aō Māori and issues facing their culture while touching on what it's like to be a rangatahi and wahine Māori. Currently, they're studying for a Bachelor of Communications, majoring in film at AUT and hope to write and release a collection of poetry in the future.



Manaia Tuwhare-Hoani
Poet | Youth Development Worker | Facilitator | Alumni

Manaia Tuwhare-Hoani (Ngāpuhi, Ngāti Wai) is a young wahine Māori spoken word poet with a passion for storytelling. She does this as part of the poetry collective, Ngā Hinepūkōrero. Together, Ngā Hinepūkōrero (NHP) participated in WORD - The Front Line 2018 in Tāmaki Makaurau, the Trans-Tasman Slam in Melbourne and came out champions. They were the first team from Aotearoa to represent at the 2019 Brave New Voices, the largest international youth poetry slam in the world.

She has appeared in media such as Te Karere, The Hui, and RNZ. In 2021 NHP did a writer's residency at the Auckland Art Gallery as part of the Toi Tū, Toi Ora exhibition. Manaia uses spoken word as a platform to bring unspoken mana Māori issues and topics to light, to explore and expand her own creativity and identity within her culture and to bring that into the classroom.

Extended Whānau

Meet our community of contractors - creators, facilitators, mentors and artists who support our programmes, projects and events



Noah Te Atakura Brown

Noah Te Atakura Brown is a distinguished spoken word artist with nearly five years of experience in writing and performing poetry. He is deeply passionate about his craft and has dedicated himself to it wholeheartedly. Of Samoan and Cook Islands descent, Noah draws inspiration from his rich cultural heritage, infusing the essence of his family and traditions into his writing. Noah is an integral member of the Word - The Front-Line alumni and a skilled graphic designer.



Ngaio Simmons

Ngaio is a Māori/Pākehā spoken word artist and educator, born and raised on the island of O'ahu, on Kānaka Maoli land within the unceded nation of Hawai'i. Now permanently residing in his ancestral homeland of Aotearoa, Ngaio continues to explore themes of diaspora, identity conflict and the complexities of being indigenous and queer in a world that often marginalizes both.

As an Auckland Poetry Slam Champion and a coach with Word - The Front Line, Ngaio has made significant contributions to the literary community. His work has been published in various esteemed publications, including Contemporary Verse, Flux Hawai'i, Literary Hub, Ora Nui, Hawai'i Review, and Bamboo Ridge, among others.



Luani Nansen

Luani Nansen is a New Zealand-born Samoan poet with roots in the villages of Falese'elā, Vaiusu, Satapuala, Lauli'i and Apolima Tai. As a proud alumni of Word - The Front Line, Luani excels in multiple roles as a poet, DJ and facilitator. He aspires to be a distinguished orator, dedicated to creating inclusive spaces and collaborating with talented individuals in the arts community.



Shania Pablo

Shania (they/them) is an Art History Honours student and a spoken word poet who actively engages in the arts. They are dedicated to storytelling and fostering safe spaces for artistic expression to thrive.

Shania is an alumni of Word - The Front Line, where they have returned as a championship coach, mentoring the next generation of poets. Additionally, they are one of the organisers of the Jafa Poetry Slam and have been extensively published throughout Aotearoa.



Noah (A.R.K) Tauti

Noah (A.R.K) Tauti is a Samoan and Niuean artist born and raised in Māngere. He is a multi-talented performer, engaging as a dancer, poet, and rapper.

Noah is a member of 4TK and a proud alumni of Word - The Front Line. He currently facilitates The Navigators Spoken Word Workshops and provides coaching support for Word - The Front Line.



Kamal Sunker

Kamal Sunker is a proud South African, South Auckland and New Zealander. He relocated to New Zealand in the 1990s, where he gained first-hand insight into the challenges faced by immigrants and families of colour. Kamal employs digital storytelling as a tool for decolonization, using it to convey narratives that challenge mainstream ideologies.

He is deeply passionate about mental health, as well as environmental and social justice. In his spare time, Kamal enjoys amplifying the voices of indigenous cultures through music and photography.

THE
VOICES OF
YOUTH
KEEP THE
WORLD
TURNING



WORD-The Frontline Tāmaki Makaurau Coaches



Action Education is a strong advocate for activating and supporting rangatiratanga among WORD – The Front Line participants through our mentorship programme. We train poets who have completed the programme to step up and coach the next cohort of talented storytellers.

To ensure that Action Education achieves this vision, we are committed to pairing qualifying schools with artists who resonate and can provide guidance in the poetic direction each team wishes to pursue in the competition. We pay careful attention to the various intersections that each poet on the team represents, including race, gender, class and more.

Former WTFL Champion Coach Eric Soakai, who coached from 2017 to 2022, remarks, “The standards set by Action Education in selecting mentors who synergize with their mentees are unparalleled. I have both witnessed and experienced firsthand the transformative nature and impact that coaches can have on their mentees. It is both powerful and beautiful to see a coach communicate through the language of poetry, guiding these young artists in honing their craft. Often drawing from lived experiences that inform their navigation of the artistic landscape, the relationships formed are organic and nurturing for both student and coach, with both parties leaving the competition as more developed artists.”

Abby Irwin-Jones

Abby Irwin-Jones is a poet, editor and bookseller raised between Tāmaki Makaurau and Hahei. She has been performing spoken word poetry for nine years and is a Trans-Tasman Poetry Slam Champion, Word UP! Slam champion, three-time finalist in Word – The Front Line, and a runner-up in the Going West Slam. Abby currently serves as the Arts Editor at Cracum, is a member of the Jafa Poetry Slam board and a coach for Word – The Front Line.

Arihia Hall

Arihia Hall (Ngāti Tūwharetoa, Ngāti Tukorehe) utilizes slam poetry as a platform to share narratives about Te Aō Māori and her experiences within it. Her work is heavily centered around her reo (language) and culture. Arihia is also an active member of the internationally acclaimed poetry group Ngā Hinepukōrero.

Fusi Puleiku

Fusi Puleiku is a dynamic teacher, community leader, and artist. Over the past nine years, he has founded and developed the De La Salle College Spoken Word Group, focusing on fostering a sense of community and understanding of Pasifika culture within the group.

Gabrielle Togatama

With a heart for community and a flair for the performing arts, Vitinia-Gabrielle Togatama is a passionate youth worker dedicated to empowering rangatahi. Born and raised in Sāmoa, she is a proud descendant of Niue and Fiji. Gabrielle has been a creative force since childhood, expressing herself through singing, art, theatre, poetry and dance. She is both an alumni and a coach of Word - The Front Line.

Jennifer Rockwell

Jenny Rockwell (she/her) is the author of *Vultures* (Dead Bird Books). Her work has been published in *The Poetry New Zealand Yearbook*, *VICE*, *Rat World*, *The Spinoff*, *Rapture* and *Symposia*.

Jude Niua

Jude is a former WTFL alumni and a proud son of South Auckland. Having studied at Whitecliffe College of Arts and Design, Jude is a multidisciplinary artist whose work explores topics of taboo and discomfort within culture.

Kat Taufalele

Kat Taufalele is a Tongan-born, Ōtara-raised artist, lawyer and activist. An alumni of the WTFL programme, Kat has conducted workshops in both community and corporate settings, focusing on uplifting Pacific peoples through her artistic practice.

Lex Shoemaker

Lex (Ngāpuhi, Ngāti Hine) is a South Auckland-based creative with roots in spoken word and acting. His talent has led him to perform across the country. Lex was a finalist at last year's National Poetry Slam and showcases his wordplay like a superpower.

Mafi Tavo

Born and raised in South Auckland, Mafi Tavo is a proud father, poet, teacher and bodybuilder. He is one of the founding members of the South Auckland Poets Collective and currently serves as a dean at Tangaroa College.

Ngaio Simmons

Ngaio Simmons is a Māori/Pākehā spoken word artist and educator born and raised on the island of O‘ahu, on Kānaka Maoli land in the unceded nation of Hawai‘i. An Auckland Poetry Slam Champion, he is also a coach with Word - The Front Line and an Action Education facilitator. Ngaio has been published in *Contemporary Verse*, *Hawai‘i Review*, *Literary Hub*, *Ora Nui*, and *Bamboo Ridge*, among others.

Noah Tauti

Noah (A.R.K) Tauti is a Samoan and Niuean artist born and raised in Māngere. He is a dancer, poet, and rapper who is also a member of 4TK and a Word – The Front Line alumni. He currently facilitates The Navigators Spoken Word workshops for Te Karanga Trust.

Roimata Prendergast

Roimata Prendergast is a multifaceted artist and educator based in Tāmaki Makaurau, New Zealand. Of Māori, Kuki Airani and Tahitian descent, she has affiliations with Ngāti Kahu and Ngāti Tara, and connections to Mauke, Kimianagatau and Ra‘iatea. In her professional capacity, Roimata serves as the Education Manager and Storytelling Coordinator at Howick Historical Village in Pakuranga, Tāmaki Makaurau, where she develops educational programmes and storytelling initiatives that engage visitors with New Zealand’s history. Beyond her educational endeavors, Roimata actively participates in the arts community as a member of the South Auckland Poets Collective and BRÖWNALFĀ, a collective dedicated to Pacific art and culture. Roimata has been involved in various artistic projects, including the “Pacific Frequencies: Mahu An Audio Exhibition,” which showcases Pacific art and narratives.

Ruby Macomber

Ruby Macomber is a poet, researcher and teina of Te Moana-Nui-a-Kiwa; a daughter of Rotuma, Taveuni and Kaikohe. She has been published in *Landfall*, *Pantograph Punch*, *Kete Books*, *Metro*, *Awa Wāhine*, *Starling* and *Poetry Snaps* Podcast. Currently, Ruby is the New Zealand Young Writers’ Festival Writer in Residence. In 2022, she was awarded a Prime Minister’s Scholarship for Latin America to study indigenous rights and histories in Brazil. Her current obsessions include Pink V and fry bread dipped in kokoda.

Sara Afsharpur

Sara Afsharpur is a Muslim poet and visual artist from Iran who grew up in Māngere. Having published multiple pieces on page, Sara is also a former student of Zayed College for Girls.

Zech Soakai

Zech Soakai is a storyteller, educator and spoken word poet of Samoan, Tongan, German, Scottish and Irish descent based in Tāmaki Makaurau. His writing often explores themes of diaspora and Pasifika identity. He has written, performed and taught poetry both nationally and internationally and attended the Rhodes Poetry Retreat in Monolithos under the tutelage of Greek-Australian poet Luka Lesson.

WORD-The Frontline Ōtautahi Coaches

It really does take a village, here are all our talented Ōtautahi-based practitioners and who are sourced for their energy, backgrounds, and commitment to youth and holding space.

Sara Qasem

Sara Qasem is a high school teacher, spoken word poet, humanitarian and fiercely proud Palestinian living in Ōtautahi (Christchurch). An animal lover, Sara also enjoys the outdoors. While her work is deeply personal, she hopes it can be a vehicle to carry important unspoken messages within society. Sara says poetry is her solace, something she loves to share.

Daisy Speaks

Daisy Speaks is a youth advocate and proud descendant of Sāmoan orators. A specialist-generalist, she straddles the cultural, government, community and educational worlds. Poetry helps her to make sense of and navigate the tensions between them. Daisy is a trustee of WORD Christchurch.

Nakoda Tamaira-Cooper

Nakoda Tamaira-Cooper is a musician, rapper and poet. He first came into spoken word in 2020 at The Catalyst Open Mic event in Ōtautahi and decided to give it a go; he hasn't looked back since. He has also written for and performed with Th'Orchard Performing Arts Group and performed his spoken word at the Christchurch Town Hall for Christchurch City's Matariki evening.

Annabel Wilson

Annabel Wilson is a writer and teacher from Wānaka who currently lives in Lyttelton. Her poetry has been widely published, and her plays have been widely performed. Annabel's first book, *Aspiring Daybreak*, won the New Zealand Mountain Book and Film Festival Best Fiction Award and was longlisted for the Ockham Book Awards.

Jane Jones

Jane Jones is a poet at heart but a vet in practice, working at a companion animal practice in Ōtautahi. She has helped to run a writing group at Christchurch Men's Prison for over five years, which has taught her so much about the power of creative writing. She studies te reo Māori and creative writing and occasionally shares her poems with the world.

Rebecca Nash

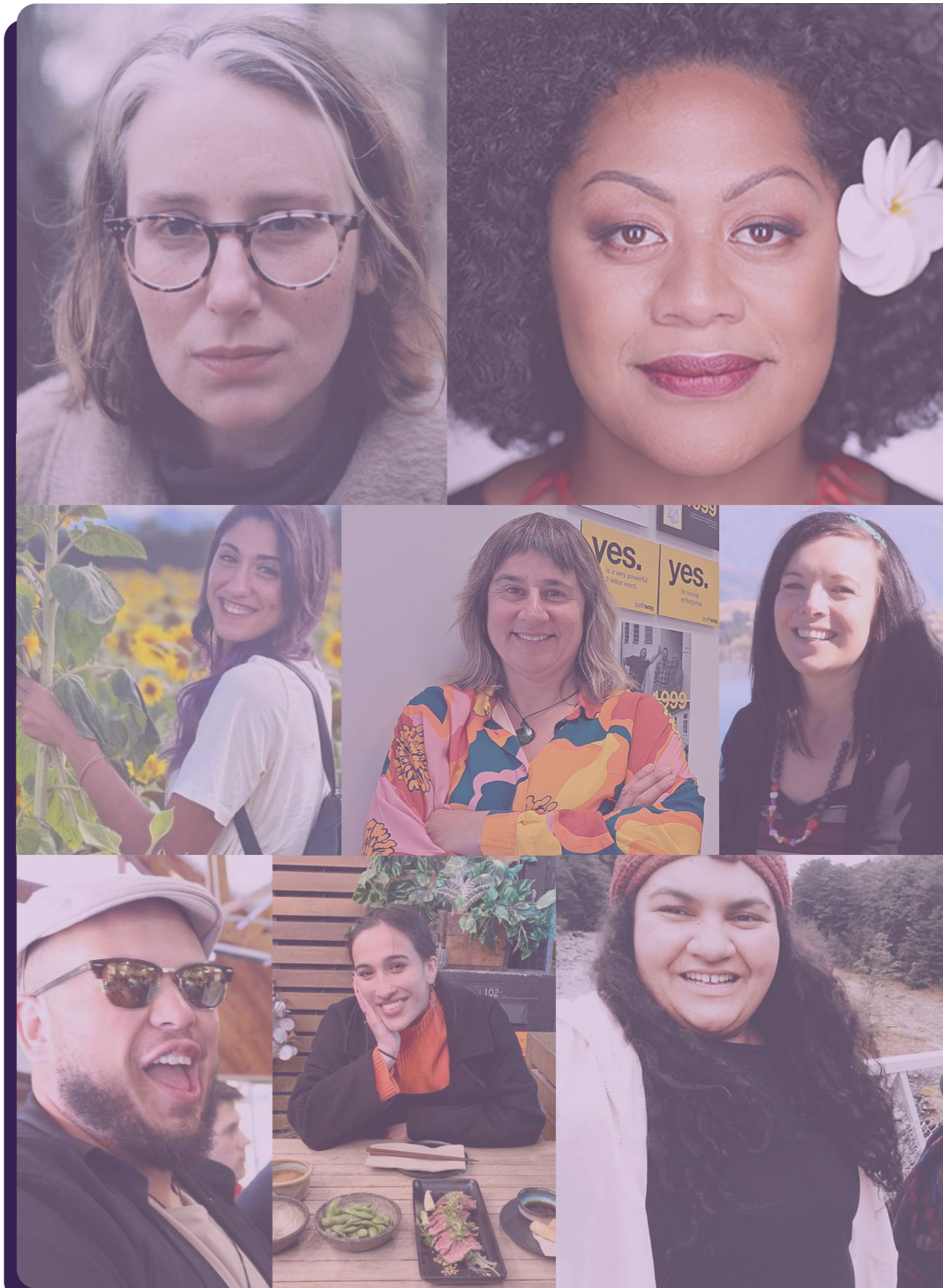
Rebecca Nash is a poet who lives in Lyttelton. She has an MA in Creative Writing from IIML and an MA in Samuel Beckett from the University of Canterbury. She has published in various journals and on The Spinoff, and her book for children, *Wilbur's Walk*, was published in 2021.

Susitina Petelo

Susitina Petelo is a proud product of Aranui, as a former head student of Aranui High School she and other young poets from Aranui High were keen poets and performers in the post quake space. She has done a full circle and now entered the poetry coaching space holding space for our rangatahi in the East- whilst studying towards a degree in education and working full time.

Grace Wilkie

Grace Wilkie is originally from Tāmaki Makaurau, but after spending the last four years in Ōtautahi, she has fallen in love with both the city and the entire South Island. A WTFL alumni and spoken poetry enthusiast, she continues to write and, when her schedule allows, perform out of love for the art form and the chance to be creative without restrictions. Grace is currently finishing her degree in Mechanical Engineering at UoC after obtaining her BSc in Psychology.



Acknowledgements

As we reflect on our accomplishments over the past year, we are filled with immense gratitude for the generosity and support of our esteemed funders. He mihi nui, he mihi, he mihi aroha kia koutou katoa. Your unwavering commitment to our community has empowered us and has made a significant difference in the lives of rangatahi and whanau within our community. We extend our heartfelt appreciation to our key funding partners, whose invaluable contributions have been pivotal in helping us realise our vision:

- Creative New Zealand
- Foundation North
- J R McKenzie Trust
- Lottery Auckland Committee
- MAS Foundation
- Ministry of Youth Development
- Auckland Council Local Boards
- Auckland Council Regional Arts and Culture Programme

Your belief in our mahi has provided us with the necessary resources to develop and enhance our programmes, enabling us to reach new heights, increase social equity and impact more lives.

We are also deeply grateful for the support from our other valued funders, who play an equally critical role in our journey:

- | | |
|----------------------------------|--------------------------------|
| • Aotearoa Gaming Trust | • JB Hi-Fi New Zealand |
| • BlueSky Community Trust | • Domino's New Zealand |
| • COGS Community Grants | • Auckland Live |
| • Dragon Community Trust | • Manurewa Local Board |
| • Far North District Council | • Puketāpapa Local Board |
| • Four Winds Foundation | • Albert Eden Local Board |
| • Northland Community Foundation | • Kaipātiki Local Board |
| • Pub Charity Limited | • Māngere-Ōtāhuhu Local Board |
| • Rata Foundation | • Ōtara-Papatoetoe Local Board |
| • The Lion Foundation | • Upper Harbour Local Board |

With your help, we have been able to empower rangatahi and whanau through the transformative power of community, education and the arts.

In addition to our amazing funders, we want to take a moment to express our deepest appreciation to our community supporters. Your contributions—whether through donations, volunteering, purchasing our merchandise, or lending your support to our programmes and events—have been invaluable to our organisation. Every act of support, no matter how big or small, has a significant impact on our ability to fulfil our mission. Your generosity and commitment to our cause not only enhance our programmes but also create a sense of belonging and community spirit.

It takes a village and together, we are cultivating a brighter future for our communities and young people. It is through your generous support that we can continue to inspire and uplift those we serve. We look forward to another year of collaboration and meaningful impact. Thank you once again for your commitment and belief in our mission.



The point is the poetry,
and when we say poetry,



we mean the people.

Financials



ACTION EDUCATION INCORPORATED PERFORMANCE REPORT FOR THE YEAR ENDED 31 MARCH 2025

Mailing Address: Action Education Inc, 4G Kitchener Road Sandringham, Auckland, 1025

Email: info@actioneducation.co.nz **Web:** www.actioneducation.co.nz

ACTION EDUCATION INCORPORATED

For the year ended 31 March 2025

Contents	Page
Entity Information	1 - 3
Independent Assurance Practitioner's Review Report	4 - 5
Statement of Service Performace	6
Statement of Financial Performance	7
Statement of Financial Position	8
Statement of Cash Flows	9
Notes to the Performance Report	10 - 14

ACTION EDUCATION INCORPORATED

Entity Information

For the year ended 31 March 2025

Legal Name of Entity	Action Education Incorporated
Type of Entity and Legal Basis	Incorporated Society and Registered Charity
Charities Registration no	CC24073
Incorporation Number	547624

Entity's Purpose or mission

Action Education Incorporated Society is Aotearoa's leading Youth Development organisation who uses Spoken Word poetry to facilitate life changing experiences. Our kaupapa (mission) is to strengthen identity and develop self-esteem through creative self-expression, using the medium of Spoken Word. Our services are located and delivered across Tamaki Makaurau, Te Tai Tokerau, and Otago.

Our set of values reflects who we are, what we do, how we do it and where we are going.

- Kia ngakau toi: We fundamentally believe that creativity is essential for wellbeing.
- Kia manaaki tētahi ki tētahi: We embody manaakitanga
- Kia hangai: Young people feel a sense of ownership and belonging
- Kia pono kia aroha: We consistently deliver on our word
- Kia ngakau nui: Our priority is the healthy development of young people which has been built on by generations of skilled facilitators
- Kia mauri ora: We bring passion, positivity, and vitality to everything we do.

We deliver workshops, programmes, mentoring, and events using Spoken Word Poetry as an effective vehicle for our communities to explore who they are, navigate their place in the world and enhance the things which bring meaning and wellbeing to them. Our annual programme includes:

- Spoken Word Workshops: Safe spaces for young people to connect while giving them tools to develop their creative expression and voice.
- Word - The Frontline Programme: A yearlong youth leadership programme.
- Ngā Toi o Rongo: A by Māori for Māori Spoken Word Poetry programme
- Community Open Mic Poetry Night Events: Inclusive and diverse community events, held monthly, providing an āhuru mowai for the community to come together and share stories.
- Mentoring & Alumni Development: Individual and group mentoring, providing training, pastoral care, career development and employment opportunities to emerging and established poets.
- Spoken Word Summit: A one-day event to support and inspire geographically or socially isolated young artists connecting them to the wider youth poetry community.
- South Auckland Showcase: A youth-driven event, where the young people of South Auckland come together, celebrate and share their stories.
- Mahuru Māori Showcase and Te Moana-nui-ā-Kiwa Showcase: Events focused on uplifting and supporting our Māori, Pasifika and Moana-based communities.

ACTION EDUCATION INCORPORATED

Entity Information
For the year ended 31 March 2025

These initiatives fostered safe and vibrant spaces where rangatahi transformed vulnerability into strength, isolation into solidarity, and creativity into leadership. Feedback consistently highlights increased confidence, improved literacy, stronger cultural identity, and enduring community connections. Alumni participation as leaders strengthens generational continuity.

Entity Structure

Action Education Incorporated Society is a independent charity using poetry for professional, educational, and personal growth in corporate boardrooms, sports clubs, community centres and classrooms across Aotearoa New Zealand.

Governance Arrangements

The constitution and rules set out the structure of the Society. The Society is governed by eight volunteer members from a range of business and professional backgrounds. Erin Matariki Carr is our Chairperson and Kaajal Kumar our Treasurer.

Entity's Reliance on Volunteers and Donated Goods or Services

Action Education Inc. relies significantly on the support of volunteers and occasionally on donated goods and services to deliver its programmes and extend its reach in the community.

Volunteers play an important role in supporting events, workshops, and community engagement initiatives. These include spoken word artists, facilitators, youth mentors, and administrative helpers who contribute their time and expertise, often without financial compensation.

While the organisation does not rely heavily on donated goods, it does at times benefit from donated venue space, equipment, or in-kind services (such as photography, design, or professional advice), which help reduce operating costs.

This support strengthens Action Education’s capacity to deliver high-impact youth development programmes while maintaining financial sustainability.

Business Location	4G Kitchener Road Sandringham, Auckland 1025 New Zealand
Registered Office	4G Kitchener Road Sandringham, Auckland 1025 New Zealand

ACTION EDUCATION INCORPORATED

Entity Information
For the year ended 31 March 2025

Phone	09 376 6646
Website	www.actioneducation.co.nz
Email	info@actioneducation.co.nz
Accountants	Findex NZ Limited Level 17, 88 Shortland Street Auckland 1010
IRD Number	028-030-101
Board Members	Ms E M Carr (Chair) Ms A Heather Ms K Kumar Mr E Rau Mr J Minty Ms G Allen Ms S Davis-Tana Mr M Esekielu
Independent Reviewer	JSA Limited
Bank	ASB Bank Ltd
Incorporation Date	29 June 1992



JSA Audit Limited
is a CPA Practice



Level 2, 155 Parnell Road
Parnell, Auckland 1052

PO Box 136, Shortland St
Auckland 1140
NZBN: 9429042113638

Phone + 64 9 302 7306
Website www.jsa.net.nz
Email enquiries@jsa.net.nz

INDEPENDENT ASSURANCE PRACTITIONER'S REVIEW REPORT

To the Trustees of Action Education Incorporated

Report on the Performance Report

We have reviewed the performance report of Action Education Incorporated ("the Society") on pages 1 to 3 and pages 6 to 14, which comprises the entity information, the statement of service performance, the statement of financial performance and statement of cash flows for the year ended 31 March 2025, the statement of financial position as at 31 March 2025, and the statement of accounting policies and other explanatory information.

Responsibilities of the Trustees for the Performance Report

The Trustees are responsible on behalf of the Society for:

- (a) The selection of service performance information, and quantification of this information to the extent practicable;
 - (b) The preparation and fair presentation of the performance report, which comprises:
 - the entity information;
 - the statement of service performance; and
 - the statement of financial performance, statement of financial position, statement of cash flows, statement of accounting policies and notes to the performance report
- in accordance with Tier 3 (NFP) Standard issued in New Zealand by the New Zealand Accounting Standards Board; and
- (c) For such internal control as those charged with governance determine is necessary to enable the preparation of the performance report that is free from material misstatement, whether due to fraud or error.

Assurance Practitioner's Responsibility

Our responsibility is to express a conclusion on the performance report. We conducted our review in accordance with International Standards on Review Engagements (New Zealand) ISRE (NZ) 2400, *Review of Historical Financial Statements Performed by an Assurance Practitioner who is not the Auditor of the Entity*, and the review of the entity information and statement of service performance in accordance with the International Standard on Assurance Engagements (New Zealand) ISAE (NZ) 3000 (Revised). Those standards require us to conclude whether anything has come to our attention that causes us to believe that the performance report, taken as a whole, is not prepared in all material respects in accordance with Tier 3 (NFP) Standard. Those standards also requires that we comply with relevant ethical requirements.

A review of the performance report in accordance with ISRE (NZ) 2400 and ISAE (NZ) 3000 (Revised) is a limited assurance engagement. The assurance practitioner performs procedures, primarily consisting of making enquiries of management and others within the entity, as appropriate, and applying analytical procedures, and evaluates the evidence obtained. The procedures selected depend on our judgement, including the areas identified where a material misstatement is likely to arise and includes performing

procedures to obtain evidence and evaluating whether the reported outcomes and outputs, and quantification of the outputs to the extent practicable, are relevant, reliable, comparable and understandable.

The procedures performed in a review are substantially less than those performed in an audit conducted in accordance with International Standards on Auditing (New Zealand) and ISAE (NZ) 3000 (Revised). Accordingly, we do not express an audit opinion on this performance report.

Other than in our capacity as independent review practitioner we have no relationship with, or interests in, Action Education Incorporated.

Conclusion

Based on our review, nothing has come to our attention that causes us to believe that:

- a) the reported service performance information, and quantification of that information, to the extent practicable, are not suitable; and
- b) the performance report on pages 1 to 3 and pages 6 to 14 does not present fairly, in all material respects:
 - the entity information for the year then ended;
 - the service performance for the year then ended; and
 - the financial position of Action Education Incorporated as at 31 March 2025, and its financial performance, and cash flows for the year then ended in accordance with Tier 3 (NFP) Standard.

Other Matter

This is the first performance report prepared applying Tier 3 (NFP) Standards. Previously, the entity has reported under the special purpose framework for the sole purpose of complying with the financial reporting requirements of the Incorporated Societies Act 1908.

The special purpose financial statements of Action Education Incorporated for the year ended 31 March 2024 was reviewed by another assurance practitioner who expressed an unqualified conclusion on those statements on 01 August 2024.

Restriction of use

This report is made solely to the Trustees, as a body. Our review has been undertaken so that we might state those matters we are required to state to them in an Independent Assurance Practitioner's Review Report and for no other purpose. To the fullest extent permitted by law, we do not accept or assume responsibility to anyone other than the Trustees as a body, for our review work, for our Independent Assurance Practitioner's Review Report, or for the conclusions we have formed.

JSA AUDIT LTD

JSA Audit Limited
Parnell, Auckland
01 September 2025

ACTION EDUCATION INCORPORATED
Statement of Service Performance
For the year ended 31 March 2025

Medium to long term objectives
 Action Education Incorporated Society exists to empower young people through creative and strengths-based programmes, with a focus on spoken word poetry as a tool for expression, connection, and personal development.

1. Develop foundational skills in communication, critical thinking, and emotional intelligence [Short Term Outcome]
 2. Strengthen identity and self-worth by connecting to culture and community [Medium Term Outcome]
 3. Become catalysts for change – leading initiatives, influencing peers, and reshaping narratives [Long Term Outcome]

Key outcomes achieved included:
Increased confidence and self-expression among young people, particularly those from marginalised and underrepresented communities. Participants consistently reported feeling more confident in their voices and more capable of articulating their lived experiences.

Enhanced wellbeing and resilience, especially among rangatahi navigating mental health challenges, cultural disconnection, or social isolation. Our creative spaces supported emotional regulation, identity exploration, and peer connection.

Strengthened cultural identity and pride, particularly through kaupapa Māori and Pasifika-led programmes such as *Ngā Toi O Rongo*, *Mahuru Māori Showcase*, and *Te Moana-nui-ā-Kiwa Open Mic*. These spaces enabled rangatahi to connect with their whakapapa, language, and stories.

Youth voice and leadership development through platforms like *WORD – The Front Line*, mentoring initiatives, and showcases. Many alumni returned as mentors, facilitators, and cultural leaders—demonstrating a clear pathway from participant to practitioner.

Broader access to the arts and equity in creative opportunities, achieved by delivering 746 free workshops and 23 events across Aotearoa, engaging 7,786 rangatahi and reaching audiences of nearly 9,790. Our commitment to removing financial and cultural barriers ensured participation from diverse communities.

Our outcomes are evidenced through consistent participant feedback, facilitator reports, partnerships with schools and community organisations, and strong alumni engagement. This reporting period also marked our transition to an independent Māori and Pacific-led Trust Board, ensuring long-term sustainability, community alignment, and cultural

	Actual*	Actual*
Description of significant activities	This Year	Last Year
Spoken Word Workshops Delivered	746	604
Number of young people taking part in workshops, programmes and events	9,790	11,408
Total Spoken Word Events	23	29
WORD - The Front-Line programme delivered (Auckland and Christchurch)	2	2

ACTION EDUCATION INCORPORATED
Statement of Financial Performance
For the year ended 31 March 2025


	Note	2025	2024
		\$	\$
Revenue			
Government service delivery grants/contracts		20,000	-
Non-government service delivery grants/contracts		99,119	84,505
Donations, koha, bequests and other general fundraising activities		20,826	1,523
General grants		594,180	526,945
Interest, dividends and other investment revenue		412	100
Total revenue		734,536	613,073
Expenditure			
Employee remuneration and other related expenses		413,239	385,595
Other expenses related to service delivery		213,775	195,100
Other expenses		88,794	66,088
Total expenditure		715,809	646,783
Surplus/(Deficit) for the year		18,728	(33,710)

These financial statements should be read in conjunction with the Notes to the Performance Report and Independent Assurance Practitioner’s Review Report.

ACTION EDUCATION INCORPORATED
Statement of Financial Position
As at 31 March 2025

	Note	2025	2024
		\$	\$
ASSETS			
Current Assets			
Debtors and prepayments	4	9,256	52,325
Cash and short-term deposits	5	138,811	135,394
Other current assets	6	7,281	-
Total Current Assets		155,348	187,719
Non-current Assets			
Property, plant and equipment	3	28,161	6,102
Total Non-current Assets		28,161	6,102
Total Assets		183,509	193,821
LIABILITIES			
Current Liabilities			
Employee costs payable	7	45,009	39,848
Deferred revenue	10	47,867	95,000
Creditors and accrued expenses	8	35,800	26,068
Total current Liabilities		128,676	160,916
Non-Current Liabilities			
Loans	9	3,200	-
Total Non-current Liabilities		3,200	-
Total Liabilities		131,876	160,916
Net Assets		51,634	32,905
Accumulated Funds			
Accumulated Surplus	12	51,634	32,905
Total Accumulated Funds		51,634	32,905

Signed for and on behalf of Action Education Incorporated:

 1/9/2025 Erin Matariki Carr (Chair) Date	 1/9/2025 Kaajal Kumar (Treasurer) Date
---	--

These financial statements should be read in conjunction with the Notes to the Performance Report and Independent Assurance Practitioner's Review Report.

ACTION EDUCATION INCORPORATED
Statement of Cash Flows
For the year ended 31 March 2025

	2025	2024
	\$	\$
Cash flows from operating activities		
Operating Receipts		
Non-government service delivery grants/contracts	99,119	74,667
Government service delivery grants/contracts	63,069	-
General grants	547,046	426,182
Donations, koha, bequests and other general fundraising activities	20,826	461
Interest received	412	100
Total Receipts	730,472	501,410
Operating Payments		
Other expenses related to service delivery	(213,775)	(195,100)
Other expenses	(86,343)	(164,540)
Employee remuneration and other related payments	(408,078)	(306,486)
Total Payments	(708,197)	(666,126)
Net cash flows from (to) operating activities	22,275	(164,716)
Cash flows from other activities		
Cash was received from		
Loan Received	3,200	-
Cash was applied to		
Payments to acquire property, plant and equipment	(22,059)	(4,710)
Net cash flows from other activities	(18,859)	(4,710)
Net decrease in cash	3,416	(169,426)
Opening cash 1 April 2024	135,394	304,820
Closing cash balance 31 March 2025	138,811	135,394

These financial statements should be read in conjunction with the Notes to the Performance Report and Independent Assurance Practitioner's Review Report.

ACTION EDUCATION INCORPORATED
Notes to the Performance Report
For the year ended 31 March 2025

1 Introduction

Reporting Entity:

Action Education Incorporated ("the Society") is an incorporated society under the Incorporated Societies Act 2022, formed on 29th June 1992.

The Society delivers community services including personal development, counselling, and youth development programmes.

The Society is a public benefit entity and its primary objective is to provide services for community and social benefit, rather than making a financial return. Accordingly, the Society has designated themselves as a not-for-profit public benefit entity (not-for-profit PBE's) for the purpose of financial reporting.

Basis of Preparation:

This performance report is prepared in accordance with the XRB's Tier 3 (NFP) Standard. The entity is eligible to apply these requirements as it does not have public accountability and has total annual expenses of less than \$5,000,000. All transactions in the performance report are reported using the accrual basis of accounting. This performance report is prepared under the assumption that the entity will continue to operate for the foreseeable future.

The performance report has been prepared on a historical cost basis.

The performance report is presented in New Zealand dollars, which is the society's functional currency, rounded to the nearest dollar.

The performance report has been prepared on a going concern basis of accounting.

Income Tax

The Society is a registered charity with Charities Services and has charitable status with the Inland Revenue so is not liable for income tax, under the section CW 41 of the Income Tax Act 2007.

GST

All amounts are recorded on a GST exclusive basis, except for Debtors and Creditors which are stated inclusive of GST.

2 Change in Accounting Policies

This is the first performance report prepared applying Tier 3 (NFP) Standards. Previously, the entity has reported under the special purpose framework for the sole purpose of complying with the financial reporting requirements of the Incorporated Societies Act 1908. Other than this, there have been no changes in accounting policies during the financial year.

Revenue

Revenue from exchange transactions are measured at the fair value of consideration received or receivable.

a) Contracts: Revenue from contracts is recognised as the services provided by reference to the stage of completion. Where the contract outcome cannot be measured reliably, revenue is recognised only to the extent that the expenses incurred are recoverable.

b) Significant grants, received with no documented expectations over use:
These are recorded as revenue when cash is received. Revenue is not deferred even if the society expects to spend the funds received on related expenditures in future periods.

Action Education Incorporated
Notes to the Performance Report (continued)
For the year ended 31 March 2025

c) Significant grants received with documented expectations over use:

On receipt of grant, the society records the asset for funding received (generally cash) and a matching deferred revenue balance. As or when the documented expectations over use are met, the deferred revenue balance is reduced and revenue is recorded. The deferred revenue balance as a balance date reflects the extent to which the documented expectations over use have not yet been satisfied.

d) Insignificant grants received:

The society records as revenue when cash is received. Revenue recognition is not deferred even if insignificant grants with documented expectations over use.

3 Property, Plant and Equipment

Property, Plant and Equipment is measured at cost less accumulated depreciation and impairment. Cost includes items directly attributed to the acquisition, as an asset have future economic benefits and the cost or fair value of the items can be measured reliably. Where an asset is acquired at no cost, or for a nominal cost, it is recognised at fair value as at the date of acquisition.

Depreciation is charged on a straight-line basis and diminishing value over the useful life of the asset. Depreciation is charged at rates calculated to allocate the cost or valuation of the asset less any estimated value over its remaining useful life. The useful lives of major classes of assets have been estimated as follows:

Asset Class	Method	Rate			
Equipment Fixtures & Fittings	Straight Line	8.30 - 10.00%			
Motor Vehicles	Diminishing value	30%			
Software and Intangibles					
	Equipment Fixtures & Fittings	Motor Vehicles	Software & Intangibles	Total	
	\$	\$		\$	
Cost or Valuation					
As at 1 April 2024	29,405	4,996	-	34,401	
Additions	-	4,783	20,000	24,783	
Disposals	-	-	-	-	
As at 31 March 2025	29,405	9,779	20,000	59,184	
Accumulated Depreciation					
As at 1 April 2024	23,303	4,996	-	28,299	
Depreciation	2,006	717	-	2,724	
As at 31 March 2025	25,309	5,713	-	31,023	
Net Book Values					
As at 1 April 2024	6,102	-	-	6,102	
As at 31 March 2025	4,096	4,065	20,000	28,161	

Action Education Incorporated
Notes to the Performance Report (continued)
For the year ended 31 March 2025

4 Debtors and Prepayments

Receivables are initially recognised at fair value and subsequently measured at amortised cost less any provision for impairment. A provision for impairment of receivables is established when there is evidence that the Society will not be able to collect all amounts due.

	2025	2024
	\$	\$
Debtors	2,855	42,190
Prepayments	6,401	10,135
	<u>9,256</u>	<u>52,325</u>

5 Cash and short term deposits

	2025	2024
	\$	\$
ASB Cheque Account	25,004	133,151
ASB Business Saver	113,807	2,243
	<u>138,811</u>	<u>135,394</u>

6 Other Current Assets

Other Current Assets are recognised at fair value.

	2025	2024
	\$	\$
Tenancy Bond - 4G Kitchener Road Sandringham	7,281	-

7 Employee costs payable

Liabilities for wages and salaries and annual leave are recognised in Statement of Financial Performance during the period in which the employee rendered the services, and are generally expected to be settled within 12 months of the balance date. The liabilities for these short-term benefits are measured at the amounts expected to be paid. Sick leave is recognised as an expense when the leave is taken and is measured at the rates paid.

	2025	2024
	\$	\$
PAYE Payable and KiwiSaver	18,867	11,287
Holiday Pay	26,142	28,561
	<u>45,009</u>	<u>39,848</u>

Action Education Incorporated
Notes to the Performance Report (continued)
For the year ended 31 March 2025

8 Creditors and accrued expenses

The Society recognises a provision for future expenditure when there is a present obligation as a result of a past event and a reliable estimate can be made of the amount of the obligation.

	2025	2024
	\$	\$
Accounts payable	22,392	7,357
GST Payable	4,658	1,698
Accruals	8,448	17,012
ASB Credit Card	301	-
	<u>35,799</u>	<u>26,067</u>

9 Loan

The following loan from Youthline Auckland charitable Trust was initially drawn down in October 2024 for \$5,500, to purchase two motor vehicles. The loan is interest free and unsecured with monthly repayments of \$460.

	2025	2024
	\$	\$
Youthline Auckland Charitable Trust	3,200	-

10 Deferred Revenue

The following funding was received by the Society prior to balance date and relates to the subsequent financial year. These amounts are only recognised when the conditions attached are satisfied:

	2025	2024
	\$	\$
The Trust	7,867	-
NZ Lottery Grants Board	40,000	-
Creative NZ	-	45,000
Foundation North	-	50,000
	<u>47,867</u>	<u>95,000</u>

Funds received from The Trust are advanced to Action Education and cover the period 15 April 2025 to 30 September 2025. The funds are to support Action Education's local coordination team in their delivery for "Word of the Front Line" event in Christchurch.

Funds received from NZ Lottery Grants Board cover the period 17 March 2025 to 17 March 2027. The grant is to assist delivery of events held by Action Education. A results report will be provided to Internal Affairs after the grant has been fully utilised.

11 Financial Risk Management

Financial assets are classified as loans and other receivables and include cash at bank and accounts receivable. Financial liabilities are classified at amortised cost and include payables and provisions. The carrying value of financial assets and liabilities closely approximate their fair value. The Board assesses whether there is any objective evidence that a financial asset or liability is impaired. Any impairment losses are recognised in the statement of financial performance.

Action Education Incorporated
Notes to the Performance Report (continued)
As at 1 April 2024

12 Accumulated Funds

	2025	2024
	\$	\$
Opening balance	32,905	66,616
Surplus/(Deficit)	18,728	(33,711)
Closing balance	51,634	32,905

13 Related Parties

Youthline Auckland Charitable Trust was controlling entity of the Society until the 1st of September 2024. There have been no impairment of related party balances during the year (2024: nil) . The Society had a related party relationship with its parent entity, Youthline Auckland Charitable Trust. Related party transactions that were material in nature that were incurred during the financial year are as noted below. The balance outstanding as at 31 March 2025 was repaid in full post year end.

	2025	2024
	\$	\$
<u>Youthline Auckland Charitable Trust</u>		
Income : Share of Grant received	39,750	25,000
Expenses: Administration, rent and IT Services	60,897	63,581
Balances Receivable:		28,750
	-	
Balances Payable (included with payables and provisions):	6,253	7,356

14 Commitments & Contingencies

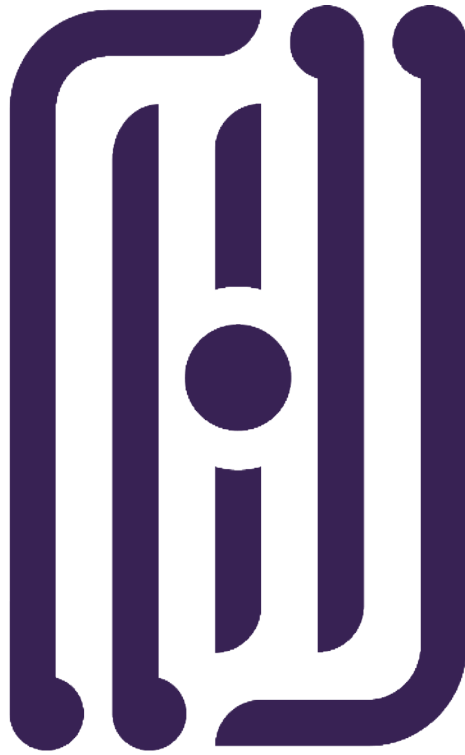
There are no commitments as at balance date. (2024: nil)
No significant contingent liabilities are known to exist at balance date. (2024: nil)

15 Subsequent Events

There are no significant subsequent events. Action Education Incorporated Society is exploring the possibility of transitioning from an Incorporated Society to a Charitable Trust. The board has engaged lawyers to advise on this matter. At the time of review of Action Education's financial statements, no decision has been made relating to the change to a Charitable Trust.

16 Ability to Continue Operating

The entity will continue to operate for the foreseeable future.



ACTION ED

**HE REO RANGATAHI,
HE AO HURIHURI**
